

***Giao Diem Humanitarian Foundation (GDHF) Pediatric  
Nutrition Supplement Program (PNSP)  
9/15/2020 – 8/15/2021***

***Final Report***

Submitted August, 2021

## TABLE OF CONTENTS

<b>Project Overview/Summary</b> .....	Page 1
Background context to highlight importance of this program .....	Page 1
Project description .....	Page 2
<b>Activity Implementation Progress</b> .....	Page 5
Brief Narrative of Key Achievements and challenges .....	Page 5
Outcome 1: Reducing malnutrition rates by 25% .....	Page 6
Outcome 2: Reducing anemia rates by 20% .....	Page 9
Outcome 3: 70% of caregivers who take part complete all NEC sessions: .....	Page 12
Implementation Status/Challenges .....	Page 13
Other findings/observations .....	Page 14
<b>Financial &amp; Budget Narrative</b> .....	Page 21
<b>Success Story</b> .....	Page 21
<b>Monitoring &amp; Evaluation</b> .....	Page 23
<b>Photos highlighting distribution of food during the pandemic</b> .....	Page 34



**2020-2021 Pediatric Nutrition & Supplement Program  
FINAL REPORT  
August 2021**

Organization Name:	<i>Giao Diem Humanitarian Foundation</i>
Project Title:	<i>Pediatric Nutrition Supplement Program (PNSP)</i>
Project Start/End Date	<i>9/15/2020 – 8/15/2021</i>
Approved Grant Amount	<i>\$135,000</i>
Quarterly or Final?	<i>Final Report</i>
Reporting Period Date:	<i>5/1/2021 – 8/15/2021</i>

**A. Project Overview/Summary:**

**1. Background Context to Highlight Importance of This Program:**

Vietnam is one of seven sub-regions in the world with a high prevalence of a stunted rate, with at least 1 out of 4 children under 5 years of age experiencing stunted growth.<sup>(3)</sup> Stunting is the result of malnutrition in utero and early childhood. In 2019, UNICEF, WHO and World Bank published findings showing there is still insufficient progress being made worldwide to reach target goals for stunting (low height-to-age), wasting (low weight-to-height), severe wasting, and obesity among children under 5 years of age.<sup>(1)</sup> Chronic malnutrition leading to stunting is a challenge for many developing countries. It requires long-term commitment as well as an effective and sustained multisectoral nutrition program.

In 2018, new thresholds for the prevalence of stunting rate (between 20% and 29%) and wasting rate (greater or equal 15%) were released, leading to the recommendation of more resources to be allocated in areas with such high prevalence.<sup>(2)</sup>

Despite tremendous progress made by the Vietnamese government in reducing its children’s wasting rate (the national average is 6.4% as reported in 2015), the national stunting rate continues to be at 24.7%.<sup>(4)</sup> Many children are still left behind, including those in the rural highland and coastal areas of Central Vietnam. It is reported that ethnic minority children under 5 years of age from poor households in mountainous areas in Vietnam suffer a 33% (1 in 3) stunting rate <sup>(1)</sup> and have a very high prevalence of wasting rate, at least 15% or higher (as measured in our participating schools in Quảng Trị and A Lưới).

For this 2020-2021 school year, our Pediatric Nutritional Supplement Program (PNSP) continues its effort to reduce the rate of malnutrition—specifically stunting, wasting, and micronutrient deficiencies—in underweight ethnic minority children in the central highland and mountainous areas of Huế (A Lưới) and Quảng Trị. Additionally, we continue to provide PNSP support to the preschool children in central and rural coastal Vietnam where the prevalence of wasting is above the Vietnamese government’s goal of less than 5%.

After seeing encouraging results from our school-based “Nutrition Education and Cooking” (NEC) program for parents in Quảng Trị and A Lưới, we expanded this program to mothers or caregivers of malnourished children to all participating schools, using the modified ENA (Essential Nutrition Actions) and EHA (Essential Hygienic Actions) guides.

Through the NEC program, we aim to empower these mothers and caregivers with hands-on, practical and essential nutrition and care practices for their children despite their poverty and low socio-economic situation, so they can help their children become nourished again. We believe “Knowledge Is Power,” and that NEC—which uses concrete activities and lesson plans to teach essential nutrition and hygiene practices—will have a significant impact on the future of the underserved children and families in our program.

---

<sup>(1)</sup> *Levels and Trends in Child Malnutrition. UNICEF / WHO / World Bank Group Joint Child Malnutrition Estimates – Key findings of the 2019 Edition.*

<sup>(2)</sup> *De Onis, M., et al. (2018). Prevalence thresholds for wasting, overweight and stunting in children under 5 years. Public Health Nutrition, 22(1), 175–179.*

<sup>(3)</sup> *National Review Vietnam’s Sustainable Development Goals With A Child Focus, Hanoi, Sep. 2019 – UNICEF and Vietnam Ministry of Planning and Investment, Dept. of Science, Education, Natural Resources and Environment.*

<sup>(4)</sup> *Statistics for Vietnam in 2015 by UNICEF / WHO, World Bank Joint Malnutrition Estimates.*

## **2. Project Description:**

For the 2020-21 school year, the Pediatric Nutrition and Supplement Program (PNSP) operates in two provinces: Quảng Trị and Thừa Thiên (Huế). When the school year started in September 2020, a total of **2,328** students participated in our PNSP: **389** from three schools in Quảng Trị and **1,939** from nine schools in Huế.

At the end of the school year, in June 2021, a total of **2,269** students remained: **375** from three schools in Quảng Trị and **1,894** from nine schools in Huế.

Their distribution is presented in the tables below:

QUẢNG TRỊ Province		9/2020	6/2021
Gio Linh District	<b>Linh Thượng</b> Kindergarten	161 students	157 students
	<b>Vĩnh Trường</b> Kindergarten	131 students	127 students
Đa Krông District	<b>Hoa Lan</b> Kindergarten	97 students	91 students
TOTAL		<b>389 students</b>	<b>375 students</b>

THỪA THIÊN (HUẾ) Province		9/2020	6/2021
A Lưới District	<b>Hồng Vân</b> Kindergarten	287 students	285 students
	<b>Hồng Trung</b> Kindergarten	141 students	140 students
	<b>A Ngo</b> Kindergarten	276 students	274 students
	<b>Bắc Sơn</b> Kindergarten	157 students	157 students
Hương Thủy District	<b>Hoa Nghiêm</b> Kindergarten	155 students	146 students
Phong Điền District	<b>Điền Lộc</b> Kindergarten	263 students	261 students
	<b>Điền Hải</b> Kindergarten	188 students	177 students
Quảng Điền District	<b>Đông Phú</b> Kindergarten	245 students	243 students
	<b>Quảng Công</b> Kindergarten	227 students	211 students
TOTAL		<b>1,939 students</b>	<b>1,894 students</b>

Our school-based PNSP focuses on improving the health of underweight ethnic minority children under 6 years of age and their caregivers. The program's goal is to reduce the malnutrition rate among children in participating schools. Similar to last year, the core of the nutrition supplement program includes one cup of daily-made peanut-enriched soymilk, nutrient-dense mid-day meal, and micronutrients supplementation.

Depending on various factors, participating schools receive different provisions, which can be summarized in the following table. Please note that, compared to previous years, efforts were made to streamline the different provisions at different schools to allow for better program management.

2020-2021 PROVISION

School (Campus)	Ht & Wt Measurent	Soymilk 200ml/day <18mos 100ml/d	Mid-day meal 1 serving/d	Anemia Screen	VitC,Zn,Fe 1/d, <3: liquid Zn&Fe Anemic: Extra Fe	Pediasure 1 cup/d	NEC	Nut. Ed. For staff	Anti-Parasitic Med'n
<b>QUẢNG TRỊ - GIO LINH (Full Support)</b>									
Vĩnh Trường	Yes	Yes	Yes	Yes	Yes	Yes	Yes	Yes	Yes If Need to
Linh Thượng (TT, KM)	Yes	Yes	Yes	Yes	Yes	Yes	Yes	Yes	Yes If need to
<b>QUẢNG TRỊ - ĐA KRÔNG (Full Support)</b>									
Hoa Lan (AR, LC)	Yes	Yes	Yes	Yes	Yes	Yes	Yes	Yes	Yes If need to
<b>(HUẾ) – A LƯỚI (Full Support)</b>									
Bắc Sơn	Yes	Yes	Yes	Yes	Yes	Yes*	-	Yes	Yes
A Ngo	Yes	Yes	Yes	Yes	Yes	Yes*	Yes	Yes	Yes
Hồng Trung	Yes	Yes	Yes	Yes	Yes	Yes*	Yes	Yes	Yes
Hồng Vân (TT, ĐP)	Yes	Yes	Yes	Yes	Yes	Yes*	Yes	Yes	Yes
<b>(HUẾ) – QUẢNG ĐIỀN (Partial Support)</b>									
Quảng Công	Yes	Yes	-	-	-	Yes*	-	Yes	-
Đông Phú	Yes	Yes	-	-	-	Yes*	Yes**	Yes	-
<b>(HUẾ) – PHONG ĐIỀN (Partial Support)</b>									
Điền Hải	Yes	Yes	-	-	-	Yes*	Yes**	Yes	-
Điền Lộc	Yes	Yes	-	-	-	Yes*	Yes**	Yes	-
<b>(HUẾ) – HƯƠNG THỦY (Full Support)</b>									
Hoa Nghiêm	Yes	Yes	Yes	-	-	Yes*	Yes**	Yes	-

(\* ) Only temporary in response to this year's extensively damaging flood in Huế

(\*\* ) Canceled due to the impact caused by the flood as well as local restrictions and uncertainties caused by the Covid-19 pandemic

## **B. Activity Implementation Progress:**

### **Brief Narrative of Key Achievements and challenges:**

- Like in past years, PNSP participating students normally received at least one cup of 200ml of freshly made peanut-enhanced soymilk on a daily basis (except children  $\leq$  18 months old in Quảng Trị attending “Nhà Trẻ” class or daycare, who received one cup of 100ml daily) together with supplements such as iron, zinc, and vitamin C and at least one serving of a mid-day meal with nutritious ingredients.
- However, this school year was impacted by the Covid-19 pandemic. Although the pandemic in Vietnam was under control during much of 2020, the situation suddenly and rapidly worsened in late February/early March of 2021, which led to lengthy and repeated quarantines. Finally, all schools in Quảng Trị and Huế had to be closed down for good at the end of April/early May. Consequently, the only daily high-quality source of nutrition for the great majority of malnourished students at PNSP participating schools was interrupted for a few months and then effectively stopped before the end of the school year.
- Despite the off-and-on operation of our PNSP and its NEC component in Spring 2021 due to the outbreak of new Covid-19 cases in these areas, and its eventual shutdown in May (several months earlier than normal), we still managed to provide much-needed food supplements to our students and their families in Quảng Trị and A Lưới in June.
- Using a great portion of unused Abbott grant funds that were originally allocated to fund the PNSP’s production of soymilk, the mid-day meals, and the NEC sessions (which had not been utilized due to all the pandemic-related interruptions and closures), we provided the food supplements to all poor families whose children are in PNSP in Quảng Trị and A Lưới. In addition, we were able to purchase locally produced high quality affordable masks and distributed them to all students, their families, school personnel, and NGO staff in Quảng Trị and A Lưới, as well as those attending the schools in lowland Huế.
- During this most difficult and challenging time, particularly for the ethnic minority communities who live on the edge of society, we truly believe the grant played a crucial, life-saving role for our participating students and their families.
- Thanks to the last-minute cooperation between our partnered NGOs and the local government in Huế and Quảng Trị, such valuable supplies were distributed right before the current pandemic surge.
- The NGOs were also particularly instrumental in getting the necessary government permits, and in mobilizing schools and parents, to gather for the children’s final height and weight measurements, even though this took place 6 weeks later than planned. Unfortunately, our partnered NGOs were not able to obtain the height measurements in all schools in Huế due to the time constraints imposed by the pandemic restrictions.

- Additionally, despite their efforts, Dr. Hong Nga and her assistant could not leave Hồ Chí Minh City in the south for Huế and Quảng Trị in Central Vietnam to conduct the year-end anemia test follow-up after iron supplements, due to the pandemic-related ban on travelling.

Similar to last year, the project's three outcomes of this 2020-2021 school year included:

<b>Project Outcome 1</b>	Reduced the underweight rate of targeted Vietnamese preschool children by 25%
<b>Project Outcome 2</b>	Reduced iron-deficiency anemia rates among the targeted Vietnamese school children by 20%
<b>Project Outcome 3</b>	70% of caregivers who take part in the NEC sessions completed all sessions

### 1. Outcome 1: Reducing Malnutrition Rates By 25%

#### Year-End Malnutrition Rates in Quảng Trị

AREA	SCHOOL	MALNOURISHED						Maln % Change
		9.2020		1.2021		6.2021		
Gio Linh District	Linh Thượng	59	38%	34	22%	54	34%	-11%
	Vĩnh Trường	36	28%	25	20%	30	24%	-14%
Average		95	<b>33%</b>	59	<b>21%</b>	84	<b>30%</b>	<b>-9%</b>
Đa Krong district	Hoa Lan	43	47%	28	31%	30	33%	-30%
	Average	43	<b>47%</b>	28	<b>31%</b>	30	<b>33%</b>	<b>-30%</b>
<b>Quảng Trị Average</b>		<b>138</b>	<b>37%</b>	<b>87</b>	<b>23%</b>	<b>114</b>	<b>30%</b>	<b>-19%</b>

- Schools in QT have the highest malnutrition rate in all areas of our program as baseline.



- The average year-end malnutrition rate in 6/2021 of the three full-support schools in Quảng Trị was 30%, a **19%** reduction in malnutrition rate.
- Individually, only Hoa Lan preschool (-30%)—and not Linh Thượng (-11%) nor Vĩnh Trường (-14%)—attained the program objective of 25% malnutrition reduction rate. Even though the latter two schools did not achieve our target objective goal, with the in-kind donation of food supplements via the NEC program, their malnutrition rate was still reduced rather than unchanged.
- It is a major challenge for children to maintain weight or gain weight at this time. There is a shortage of food caused by repeated recurrences of the Covid-19 pandemic, which had resulted in strict gathering bans and sporadic community quarantines. Furthermore, the economic impact from last year’s destructive flooding continues to linger and seriously affect the communities’ food security.
- Because of those adverse situations, many participating students have lost their initial weight gain measured in January 2021. Per our estimate, due to school closure, they missed their only daily high quality nutrition source for a total of one to two months depends on school location .

#### Year-End Malnutrition Rates in Huế:

AREA	SCHOOL	MALNOURISHED						Maln % Change
		9.2020		1.2021		6.2021		
A Lưới district	Hồng Vân	76	27%	43	15%	66	23%	-15%
	Hồng Trung	23	16%	14	10%	22	16%	0%
	A Ngo	66	24%	36	13%	50	18%	-25%
	Bắc Sơn	54	34%	26	17%	27	17%	-50%
<b>Huế (A Lưới) Full Support Average</b>		<b>219</b>	<b>26%</b>	<b>119</b>	<b>14%</b>	<b>165</b>	<b>19%</b>	<b>-27%</b>
Hương Thủy district	Hoa Nghiêm	9	6%	5	3%	5	3%	-50%
<b>Huế (Hoa Nghiêm) Full Support Average</b>		<b>9</b>	<b>6%</b>	<b>5</b>	<b>3%</b>	<b>5</b>	<b>3%</b>	<b>-50%</b>
Quảng Điền	Đông Phú	13	5%	6	2%	10	4%	-20%

district	Quảng Công	13	6%	9	4%	13	6%	0%
Total		26	6%	15	3%	23	5%	-17%
Phong Điền district	Điền Lộc	13	5%	6	2%	11	4%	-20%
	Điền Hải	7	4%	3	2%	7	4%	0%
Total		20	5%	9	2%	18	4%	-20%
<b>Huế</b>								
<b>Partial Support Average</b>		<b>46</b>	<b>5%</b>	<b>24</b>	<b>3%</b>	<b>41</b>	<b>5%</b>	<b>0%</b>

*(\*) Only for classrooms with students > 3 years of age who can stand still during the height measurement for an accurate result.*

- The average year-end malnutrition rate in 6/2021 of the four full-support schools in Huế's A Lưới district was 19%, a **27%** reduction in malnutrition rate. The improvement in malnutrition rates is welcome news, demonstrating the impact of our PNSP in this poor and underserved district.
- The average year-end malnutrition rate of the full-support school Hoa Nghiệm in Huế's Hương Thủy district was 3%, a **50%** reduction in malnutrition rate. To help students and their family, PNSP continued to provide financial subsidies to Hoa Nghiệm kindergarten school to buy ingredients for one additional mid-day meal on Saturday to improve the nutrition of its students. (Students attend six days a week so parents can work on Saturday for the much-needed extra income, however small.)
- At the four Partial Support schools in Huế's lowland districts, the average year-end malnutrition rate was 5%, reflecting a **0%** reduction in overall malnutrition rate. In addition to the Covid-19 pandemic, the communities surrounding these schools suffered tremendously during last year's flooding and the resulting economic impact has continued to negatively affect the students' families.
- Individually, even though our **program objective of 25% malnutrition reduction rate** was achieved only at A Ngo (-25%), Bắc Sơn (-50%), and Hoa Nghiệm (-50%), but not at other schools in Huế, these reductions were encouraging given the lack of food due to repeated recurrences of the Covid-19 pandemic leading to strict traveling/gathering bans and sporadic community quarantine.
- Similar to Quảng Trị, these students in Huế were estimated to be absent for about two months total due to the above-mentioned adverse situations. It also means they were absent for two months from our PNSP, the only high quality nutrition source for the majority of them.

## 2. Outcome 2: Reducing Anemia Rates by 20%:

- Due to the pandemic, the baseline of anemia screening had to be postponed from September 2020 to January 2021. Due to a very high prevalence rate of anemia, all children (anemic as well as non-anemic) receive a daily recommended iron + folate supplement. Anemic children were given additional dose of iron daily.
- Regarding the **program objective for the anemia rate reduction of 20%** by the end of the school year, it was unfortunate that the year-end follow up testing for anemia in May was not possible. Anemia screening has always been done by Dr. Hồng Nga (whose specialty happens to be hematology) and her assistant. They have also been trained to use the Hemocue to obtain the results. Due to the pandemic, Dr. Hồng Nga and her assistant could not travel to Central Vietnam for the anemia follow-up treatment test at the end of the school year like they normally do every mid-May.

The baseline anemia screening results in Quảng Trị and A Lưới remain as follows:

### QUẢNG TRỊ:

AREA	SCHOOL	Anemia Maln. Students - 1.2021				Anemia Maln. Students - 5.2021**			
		# Maln.	# Yes	% Yes	% Unkn.*	# Maln.	# Yes	% Yes	% Unkn.*
Gio Linh district	Linh Thượng	62	33	53%	0%	n/a	n/a	n/a	n/a
	Vĩnh Trường	36	19	53%	3%	n/a	n/a	n/a	n/a
Total		98	52	53%	1%	n/a	n/a	n/a	n/a
Đa Krong district	Hoa Lan	43	27	63%	0%	n/a	n/a	n/a	n/a
Total		43	27	63%	0%	n/a	n/a	n/a	n/a
<b>Quảng Trị total</b>		<b>141</b>	<b>79</b>	<b>56%</b>	<b>1%</b>	<b>n/a</b>	<b>n/a</b>	<b>n/a</b>	<b>n/a</b>

(\*) Absent during the January anemia screening

(\*\*) Not available due to the pandemic

AREA	SCHOOL	Anemia Non-Maln. Students - 1.2021				Anemia Non-Maln. Students - 5.2021**			
		# Non-Maln.	# Yes	% Yes	% Unkn.*	# Non-Maln.	# Yes	% Yes	% Unkn.*

Gio Linh district	Linh Thượng	99	44	44%	0%	n/a	n/a	n/a	n/a
	Vĩnh Trường	94	44	47%	3%	n/a	n/a	n/a	n/a
Total		193	88	46%	2%	n/a	n/a	n/a	n/a
Đa Krong district	Hoa Lan	51	32	63%	2%	n/a	n/a	n/a	n/a
	Total	51	32	63%	2%	n/a	n/a	n/a	n/a
<b>Quảng Trị total</b>		<b>244</b>	<b>120</b>	<b>49%</b>	<b>2%</b>	<b>n/a</b>	<b>n/a</b>	<b>n/a</b>	<b>n/a</b>

(\*) Absent during the January anemia screening

(\*\*) Not available due to the pandemic

AREA	SCHOOL	Anemia Students =< 36 mos. 1.2021				Anemia Students =< 36 mos. 5.2021**			
		# =< 36	# Yes	% Yes	% Unkn.*	# =< 36	# Yes	% Yes	% Unkn.*
Gio Linh district	Linh Thượng	31	22	71%	0%	n/a	n/a	n/a	n/a
	Vĩnh Trường	56	25	45%	2%	n/a	n/a	n/a	n/a
Total		87	47	54%	1%	n/a	n/a	n/a	n/a
Đa Krong district	Hoa Lan	n/a	n/a	n/a	n/a	n/a	n/a	n/a	n/a
	Total	n/a	n/a	n/a	n/a	n/a	n/a	n/a	n/a
<b>Quảng Trị total</b>		<b>87</b>	<b>47</b>	<b>54%</b>	<b>1%</b>	<b>n/a</b>	<b>n/a</b>	<b>n/a</b>	<b>n/a</b>

(\*) Absent during the January anemia screening

(\*\*) Not available due to the pandemic

- Overall, among the malnourished students, the average percentage of anemic students was quite high (**56%**). Meanwhile, among the non-malnourished students, the average percentage of anemic students was lower (**49%**).
- Individually, all malnourished students in Quảng Trị have very high baseline anemia rates, **53%** in Linh Thượng, **53%** in Vĩnh Trường and **63%** in Hoa Lan.
- The average anemia rates differ about 7 percentage points between malnourished and non-malnourished students in the two schools in Đa Krong (**53% and 46%**); there is no difference in Gio Linh (**63%**).

A LƯỚI:

AREA	SCHOOL	Anemia Maln. Students 1.2021				Anemia Maln. Students 5.2021**			
		# Maln.	# Yes	% Yes	% Unkn.*	# Maln.	# Yes	% Yes	% Unkn.*
A Lưới district	Hồng Vân	77	24	31%	6%	n/a	n/a	n/a	n/a
	Hồng Trung	23	8	35%	13%	n/a	n/a	n/a	n/a
	A Ngo	68	17	25%	10%	n/a	n/a	n/a	n/a
	Bắc Sơn	54	13	24%	0%	n/a	n/a	n/a	n/a
<b>Huế A Lưới average</b>		<b>222</b>	<b>62</b>	<b>28%</b>	<b>7%</b>	<b>n/a</b>	<b>n/a</b>	<b>n/a</b>	<b>n/a</b>

(\*) Absent during the anemia screening

(\*\*) Not available due to the pandemic

AREA	SCHOOL	Anemia Non-Maln. Students 1-2021				Anemia Non-Maln. Students 5.2021**			
		# Non-Maln.	# Yes	% Yes	% Unkn.*	# Non-Maln.	# Yes	% Yes	% Unkn.*
A Lưới district	Hồng Vân	210	38	18%	15%	n/a	n/a	n/a	n/a
	Hồng Trung	118	23	19%	18%	n/a	n/a	n/a	n/a
	A Ngo	207	53	26%	3%	n/a	n/a	n/a	n/a
	Bắc Sơn	103	14	14%	0%	n/a	n/a	n/a	n/a
<b>Huế A Lưới average</b>		<b>638</b>	<b>128</b>	<b>20%</b>	<b>9%</b>	<b>n/a</b>	<b>n/a</b>	<b>n/a</b>	<b>n/a</b>

(\*) Absent during the anemia screening

(\*\*) Not available due to the pandemic

AREA	SCHOOL	Anemia Students =< 36 mos. 1.2021				Anemia Students =< 36 mos. 5.2021**			
		# =< 36	# Yes	% Yes	% Unkn.*	# =< 36	# Yes	% Yes	% Unkn.*
A Lưới district	Hồng Vân	77	25	32%	16%	n/a	n/a	n/a	n/a
	Hồng Trung	49	7	14%	33%	n/a	n/a	n/a	n/a
	A Ngo	67	19	18%	1%	n/a	n/a	n/a	n/a
	Bắc Sơn	66	18	27%	0%	n/a	n/a	n/a	n/a
<b>Huế A Lưới average</b>		<b>259</b>	<b>69</b>	<b>27%</b>	<b>11%</b>	<b>n/a</b>	<b>n/a</b>	<b>n/a</b>	<b>n/a</b>

(\*) Absent during the anemia screening

(\*\*) Not available due to the pandemic

- It should be noted that, unlike the results in Quảng Trị, some of the results at Huế’s schools may not be fully complete and accurate as the “% Unknown”, representing the % student absent, is quite high. Examples are data at Hồng Trung and A Ngo (for Anemia of Malnourished Students) and at Hồng Vân and Hồng Trung (for Anemia of Non-Malnourished Students as well as Anemia of Students ≤ 36 months, with more than 10% “Unknown.” The resulting baseline anemia rates should therefore be viewed with caution.
- In summary, in A Lưới, the average baseline anemia rate was **28%** in malnourished children, **20%** in non-malnourished children and **27%** in children ≤ 36 months old.

**3. Outcome 3: 70% of caregivers who take part in the NEC sessions complete all sessions:**

- The table below includes all information on the organization of NEC for this year:

PROVINCE / DISTRICT	SCHOOL	CAMPUS	NEC Sessions	# of PARENTS Registered
Quảng Trị / Gio Linh	Linh Thượng	Trung Tâm (main campus)	3 (out of 4)	30
		Khe Me (satellite)	1	15
	Vĩnh Trường	Trung Tâm	3 (out of 4)	42
Quảng Trị / Đa Krông	Hoa Lan	A Ròng + Làng Cát	3 (out of 4)	45
Thừa Thiên (Huế) / A Lưới	A Ngo	Trung Tâm	3 (out of 4)	53
	Hồng Trung	Trung Tâm	3 (out of 4)	30
	Hồng Vân	Trung Tâm (main campus)	3 (out of 4)	39
		Điểm Phụ (satellite)	2	24
<b>TOTAL</b>			21 Sessions	278 Parents

- As told in the previous reports, the food package given to parents at the end of each NEC session this year includes specific ingredients (dry beans, cooking oil, peanuts, sesame seeds, sugar, coconut, tofu, eggs, and locally grown vegetables) that are used during that meeting.  
The aim of the distribution of such food packages is to help parents cook the same nutritious dishes that they just learned at home for their children and family. The knowledge and experience provided by NEC hopefully stay longer and more accurately in their memories. And most importantly, the practice will certainly empower parents and give them more confidence in using their newly acquired skills and knowledge to help their malnourished children.  
They are also given a booklet which contains recipes as well as an important summary of nutritional and health education information discussed during each NEC meeting.
- However, due the resurgence of the Covid-19 pandemic, no NEC activities were completed after the second quarterly reporting period.
- Regarding the NEC **program objective**, the attendance data (Table 7) shows more than **70%** of caregivers who took part in the NEC sessions complete all sessions. Group 1 of Vĩnh Trường had the lowest attendance of 87% and Group 2 of Hồng Vân (satellite campus) had the highest attendance of 100%. The majority of other groups saw the parents' attendance rate of 90% or higher.

4. **Implementation Status/Challenges:** Are there any implementation issues? If yes, please describe:

a. **For PNSP:**

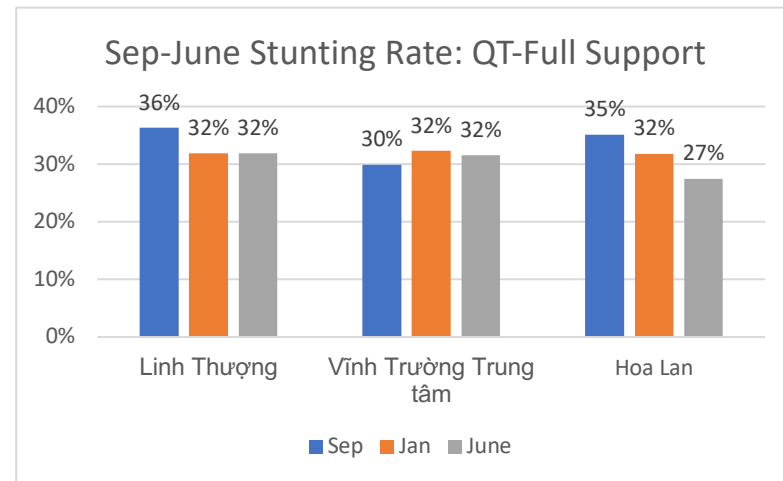
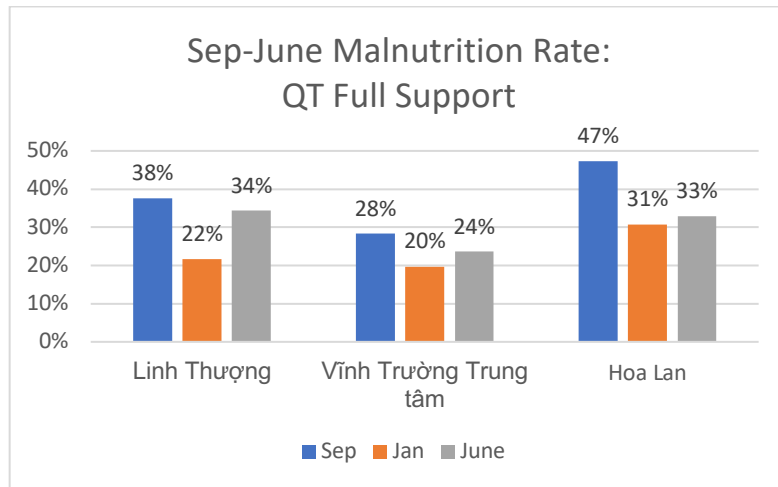
- The heavy rain and flooding that occurred in October 2020 had caused school closures for 1-2 weeks (depending on the location) and poor school attendance, especially by children less than 3 years of age.
- Although Vietnam was relatively successful in controlling the pandemic during much of 2020 and the beginning of 2021, it has experienced a serious and damaging resurgence of the Covid-19 pandemic that began in late February/early March 2021.
- For this year-end reporting period: Facing the off-and-on and currently indefinite school closures in Quảng Trị and Huế, all PNSP activities gradually slowed down and completely stopped by the beginning of May. There were also strict travel limitations (only for essential reasons) in between and within each of the provinces.

**b. For NEC:**

- As the main component of PNSP, our NEC program also had to be terminated prematurely with no activities beyond the second quarterly reporting period.

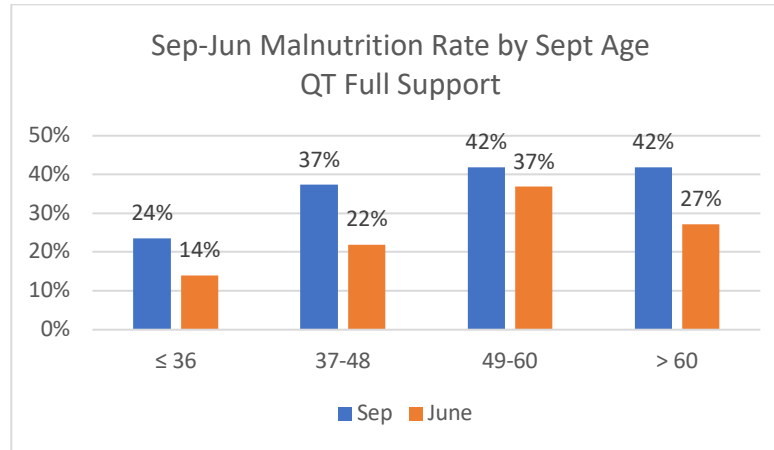
**5. Please Include any other findings/observations from this quarter including any additional tables or graphs:**

**QUẢNG TRỊ: Malnutrition and Stunting Rate:**

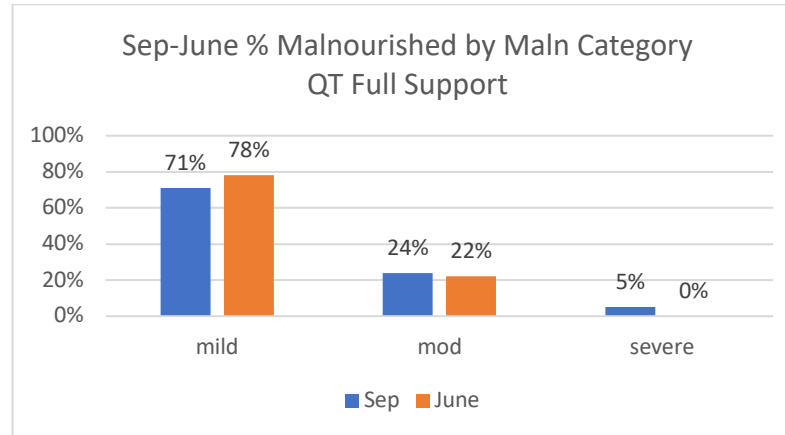




**QUẢNG TRI: Malnutrition Rate by 9/2020 Age:**

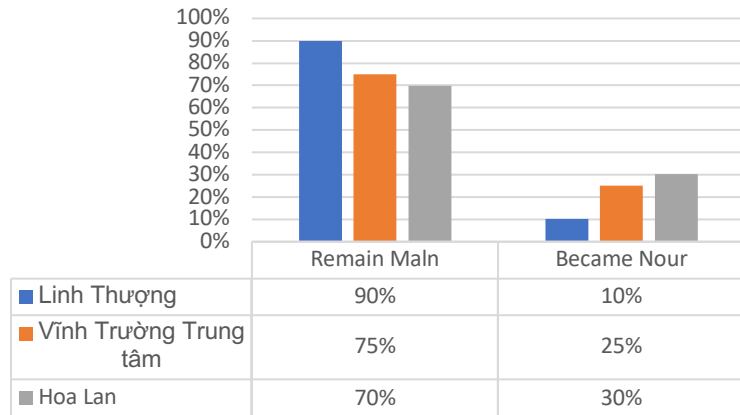


**QUẢNG TRI: Percent Malnourished by Degree of Malnutrition:**

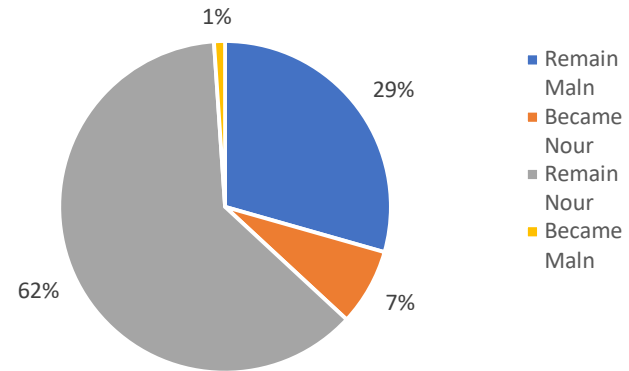


**QUẢNG TRI: Malnutrition Status Change and Population Malnutrition Status Change:**

Malnourished Sep-June Status Change  
QT Full Support

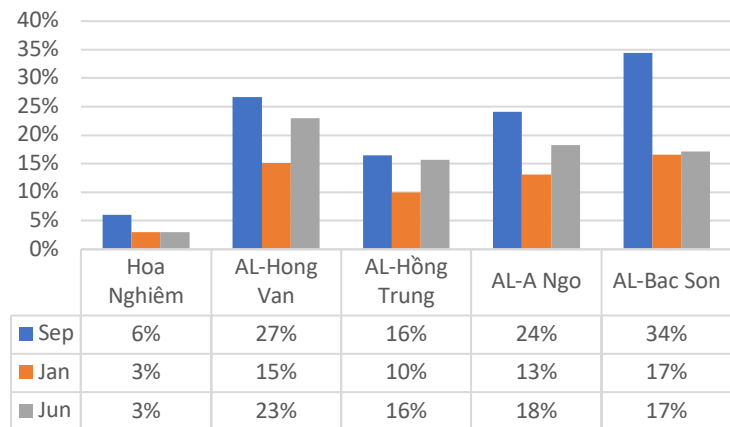


Sep-June Population Maln Status Change  
QT Full Support

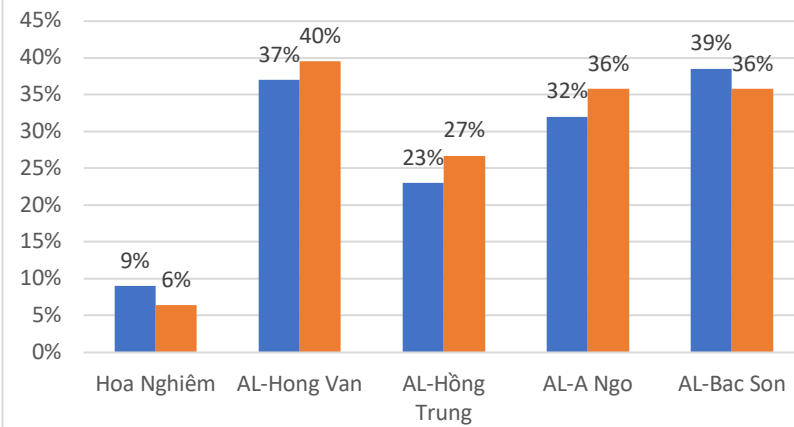


**HUẾ: Malnutrition and Stunting Rate Charts**

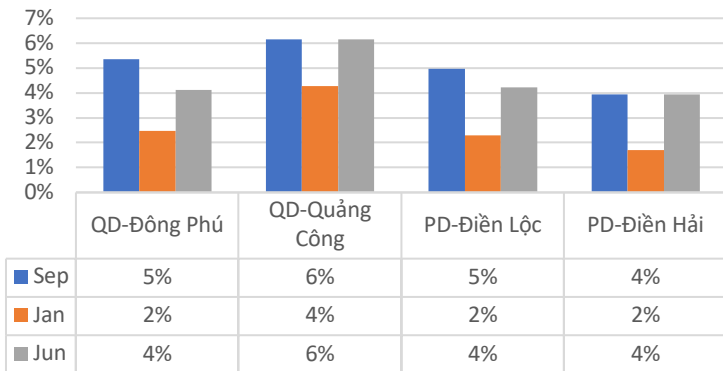
Sep-June Malnutrition Rate:  
Hue-Full Support



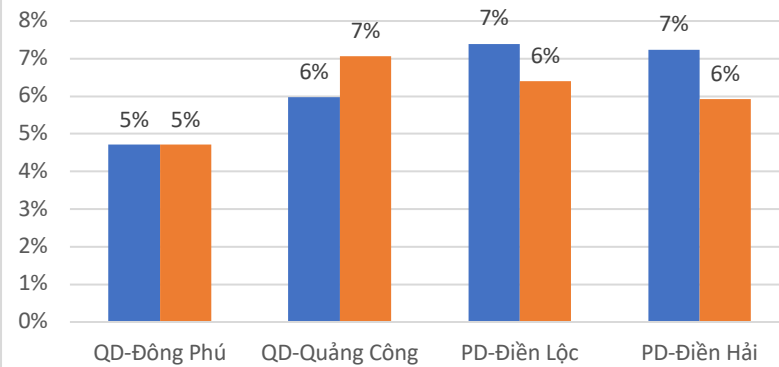
Sep-Jan Stunting Rate:  
Hue-Full Support



Sep-June Malnutrition Rate:  
Hue-Partial Support

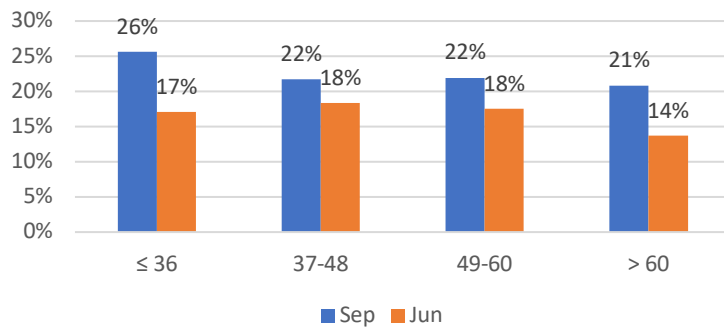


Sep-Jan Stunting Rate:  
Hue-Partial Support

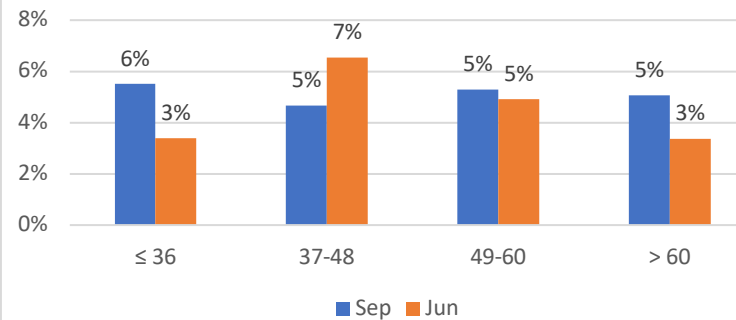


**HUẾ: Malnutrition Rate by 9/2020 Age:**

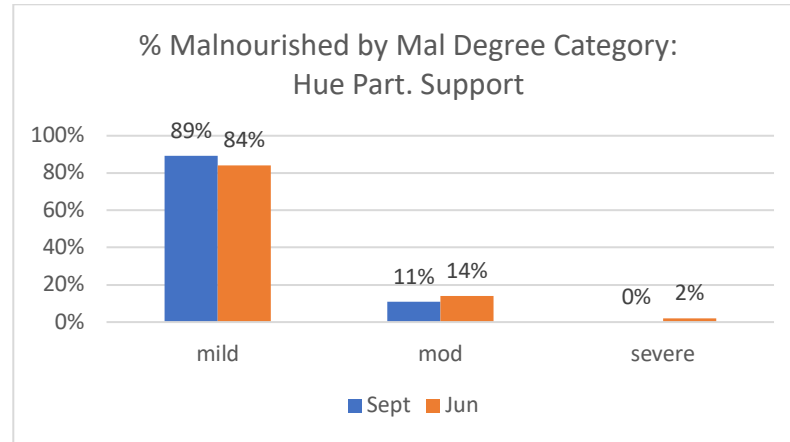
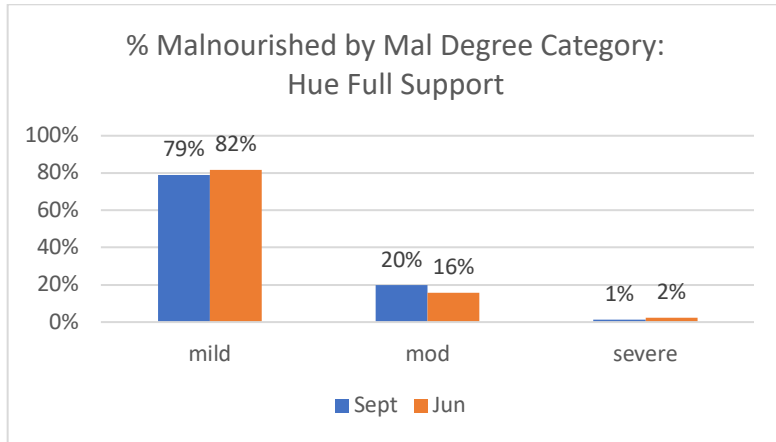
Malnutrition Rate by Sep Age:  
Hue Full support



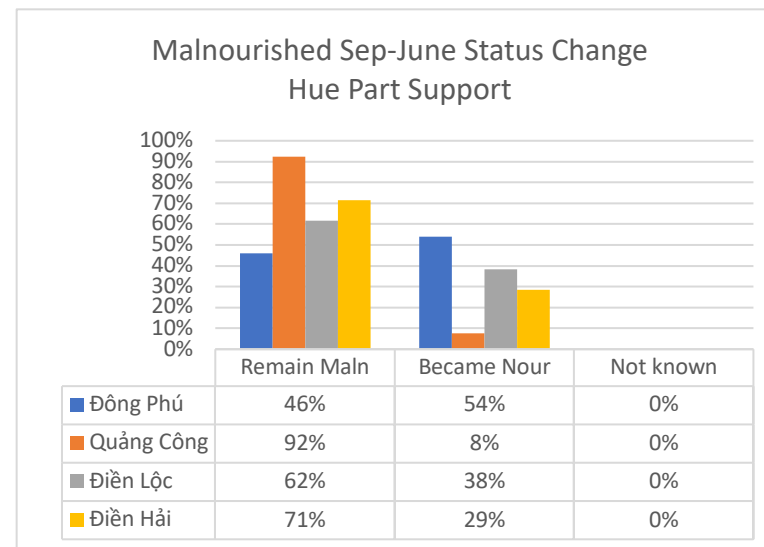
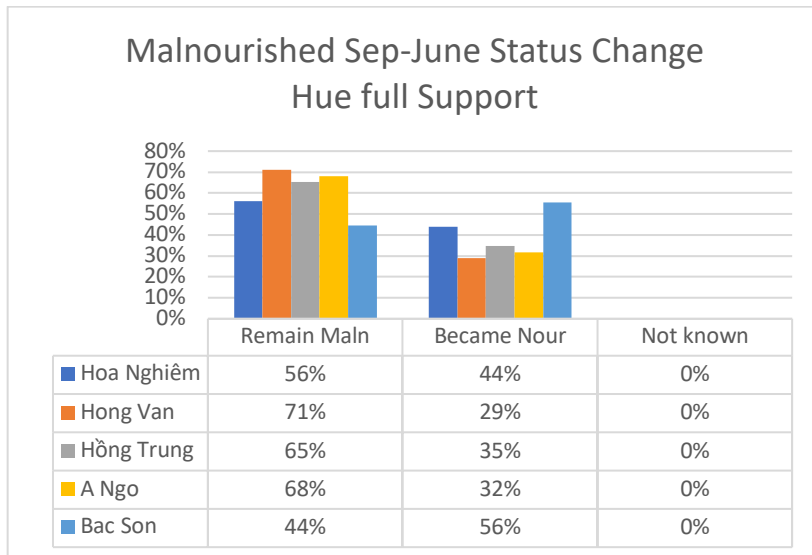
Malnutrition Rate by Sep Age:  
Hue Part. Support



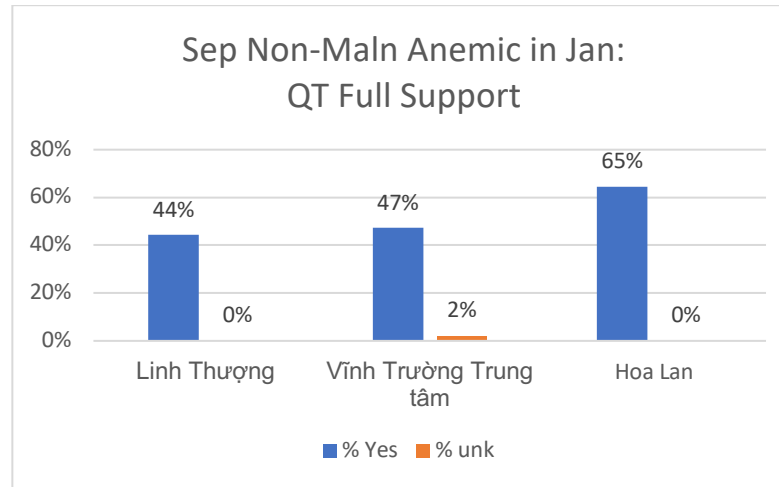
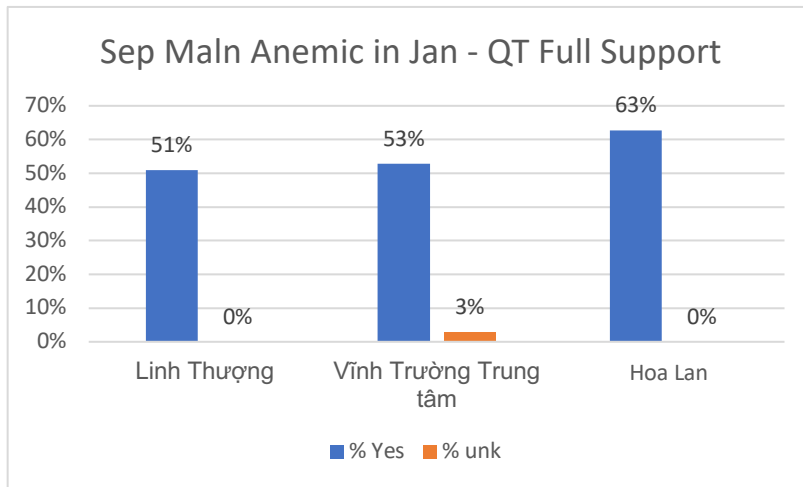
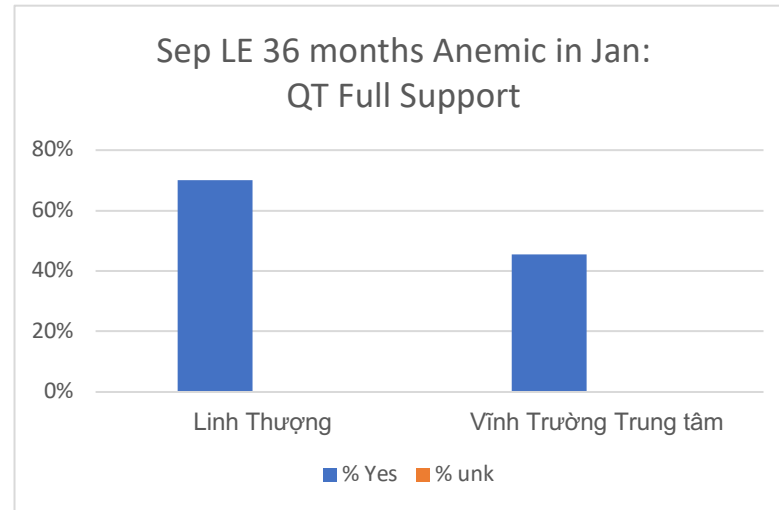
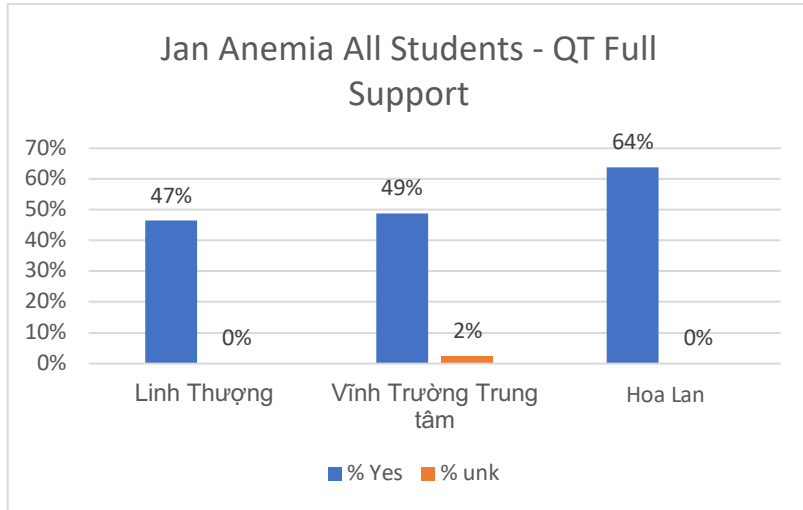
**HUẾ: Percent Malnourished by Degree of Malnutrition:**

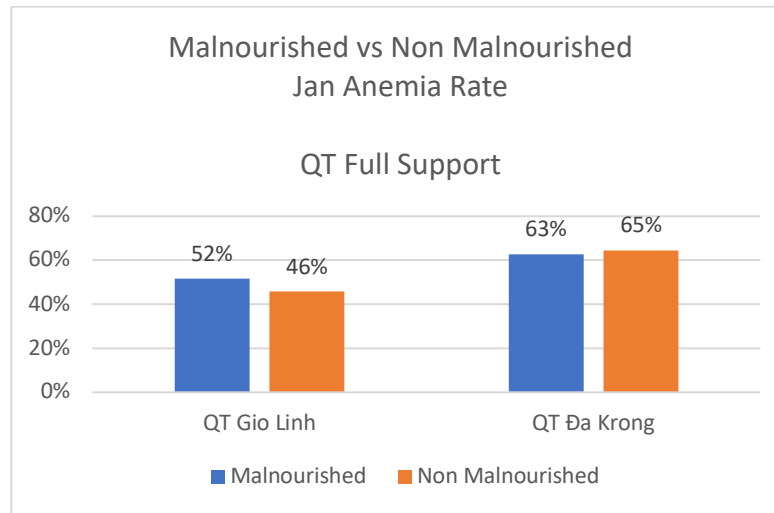


**HUẾ: Malnourished Sep–June Status Change:**

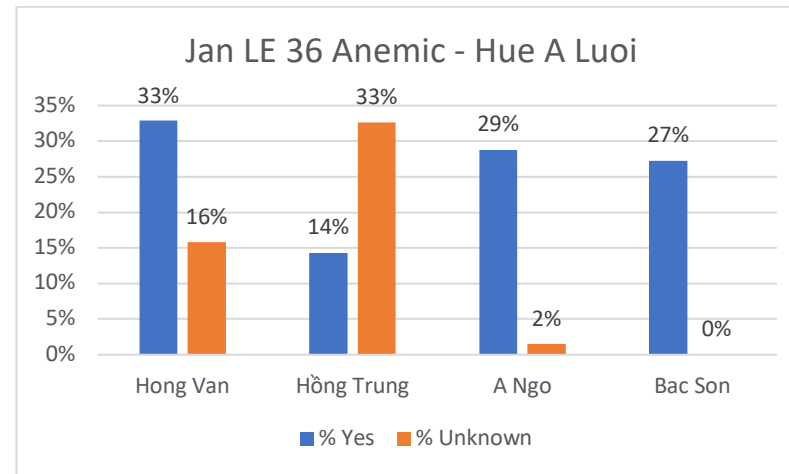
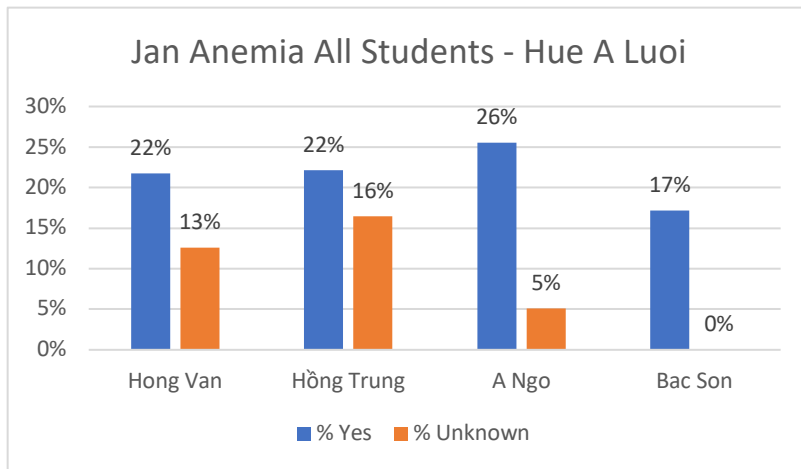


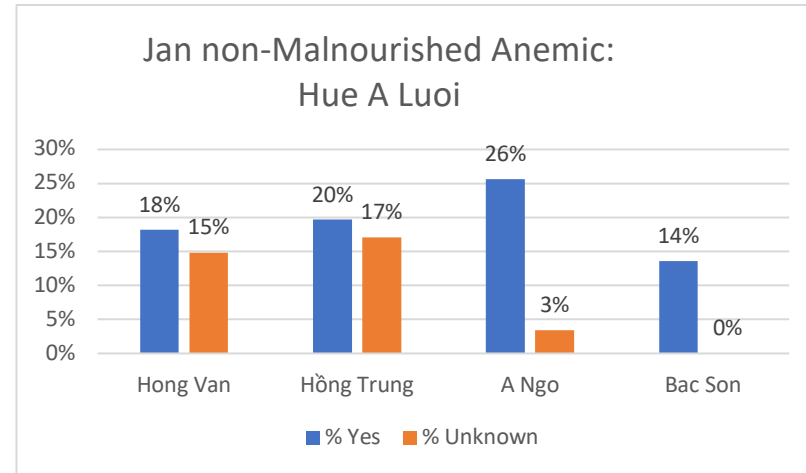
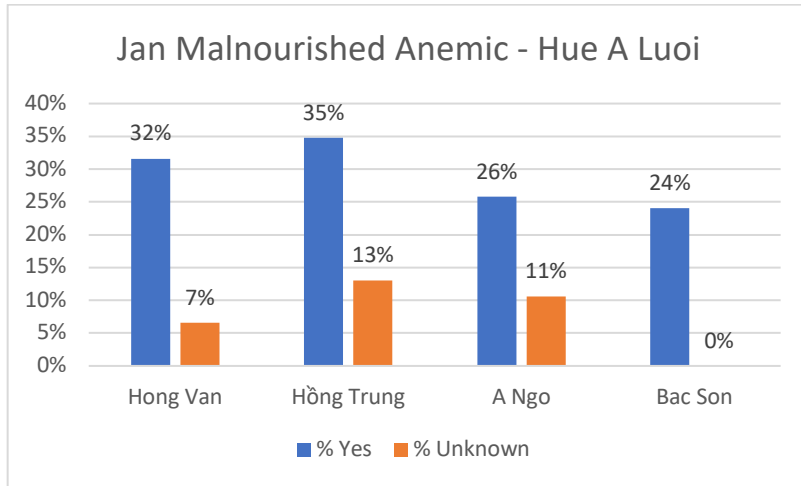
**QUẢNG TRỊ: Anemia Rate Charts**





**HUẾ: Anemia Rate Charts**





**C. Financial & Budget Narrative:** Are there any project budget/spending issues? If yes, please describe. Be sure to include any issues or concerns as they relate to: unexpected expenditures, significant budget variances and/or any implementation changes that have affected the budget?

- Travel budgeted for staff in the US as well as staff in Vietnam are underspent due to the pandemic restrictions.
- A sizable portion of the budget allocated for the normal operation of the PNSP and NEC was used to obtain food for the poor families whose students are in our PNSP. The money was also used to purchase face masks for all students and their families.

*\*Optional\**

**Success Story:** Please submit a success story, if any, from the previous quarter. A success story can be a partner/patient highlight or impact story, an unexpected result, or an important learning that was crucial to project success. If you have any pictures, please attach those under the Attachments section.

- In response to GDHF’s request to purchase food items and distribute essential food packages to the families and staff during the pandemic of Covid 19, our partnered local NGOs in Quảng Trị and Huế promptly and successfully obtained

permission to temporarily gather parents in small groups for such purpose. A total of 1,336 food packages were distributed to needy PSNP children and staff in A Luoi and Quang Tri. In addition, more than 10,000 masks were distributed to all children, their families and school staff in A Lưới, Huế lowland, and Quảng Trị.

- The NEC program has gained popularity among parents. Parents appreciated the impact of the program on their children's health and overall nutritional status of their children. They learned to cook foods outside of their norm and appreciate the importance of the alternative plant based food on their diet. The participation rate for the entire one month session in all participating schools was at 90%, the highest attendance rate we had. We received excellent feedback and desire from parents to maintain this program for next school year. We believe that nutrition and health education offered to parents as well as giving them the means to practice what they have learned, are vital in improving the overall health and nutritional status of their children, especially in these ethnic minority groups.
- There seemed to be an appreciation of the urgency as well as a high degree of understanding and cooperation among all of the parties involved.
- Please refer to pictures attached at the end of this report for the distribution of food packages to the families and staff in June 2021.



### Monitoring & Evaluation:

Please document the progress/status/results of M&E activities.

#### Key Performance Indicator (KPI) Reporting:

KPIs Selected on Application	Target Value	Results Achieved to Date (Cumulative)
<b>Total number of Direct Participants</b>	2,328 students + 210-315 NEC parents (Q2)	A total of <b>2,328</b> students participate in GDHF's Pediatric Nutrition and Supplement Program (PNSP) with <b>1,405</b> in the Full support category and <b>923</b> in the Partial support category.  Additionally, there are <b>308</b> participating mothers in the NEC sessions (as reported in Q2). Due to the pandemic, no NEC session was available during this final reporting period.
<b>Total number of Workshops conducted</b>	4	There have been already <b>1 workshop for teachers</b> and (21 x 4 =) <b>84 small-group NEC educational workshops</b> as of the Q2 reporting. No additional workshop during the final reporting period.

**Table 1: Number of students participating in the Pediatric Nutrition Supplement Program (PNSP), 2020-2021**

PROVINCE / DISTRICT	SCHOOL	CAMPUS	STUDENT POPULATION 9/2020
Quảng Trị / Gio Linh	Linh Thượng	Trung Tâm	120
		Khe Me	41
	Vĩnh Trường	Trung Tâm	131
Quảng Trị / Đa Krông	Hoa Lan	A RỒNG	67
		Làng Cát	30
Thừa Thiên (Huế) / A Lưới	A Ngo	Trung Tâm	276
	Bắc Sơn	Trung Tâm	157
	Hồng Trung	Trung Tâm	141
	Hồng Vân	Trung Tâm	177
		Điểm Phụ	110
Thừa Thiên (Huế) / Phong Điền	Điền Hải	Trung Tâm	188
	Điền Lộ	Trung Tâm	263
Thừa Thiên (Huế) / Quảng Điền	Đông Phú	Trung Tâm	245
	Quảng Công	Trung Tâm	227
Thừa Thiên (Huế) / Hương Thủy	Hoa Nghiêm	Trung Tâm	155
<b>TOTAL</b>			<b>2,328</b>

**Table 2: Change in Weight for Age by Area**

<b>(a) Weight for Age Data – Full Support</b>					
Name of Province/Area	Total number of students	Children with W/A Z-score less than -2SD			Change in Maln. Rate
		9/2020 (# / %)	1/2021 (# / %)	6/2021 (# / %)	
<b>Quảng Trị</b>	375	138 / 37%	87 / 23%	114 / 30%	<b>-19%</b>
<b>Huế A Lưới</b>	856	219 / 26%	119 / 14%	165 / 19%	<b>-27%</b>
<b>Huế Hoa Nghiê</b>	146	9 / 6%	5 / 3%	5 / 3%	<b>-50%</b>
<b>Huế Total</b>	1002	228 / 23%	124 / 12%	170 / 17%	<b>-26%</b>

<b>(b) Weight for Age Data – Partial Support</b>					
Name of Province/Area	Total number of students	Children with W/A Z-score less than -2SD			Change in Maln. Rate
		9/2020 (# / %)	1/2021 (# / %)	6/2021 (# / %)	
<b>Huế</b>	892	46 / 5%	24 / 3%	41 / 5%	<b>0%</b>

**Table 3: Weight for Age by Age Group**

<b>(a) # Students by Age – Full Support</b>																
Name of Province/Area	Age Group				9/2020 Malnutrition Rate (Sep Age)				6/2021 Malnutrition Rate (Sep Age)				Change in Maln. Rate (9/2020 – 6/2021)			
	≤ 36	37-48	49-60	> 60	≤ 36	37-48	49-60	> 60	≤ 36	37-48	49-60	> 60	≤ 36	37-48	49-60	> 60
<b>Quảng Trị</b>	85	75	117	98	24%	37%	42%	42%	14%	22%	37%	27%	-42%	-41%	-12%	-36%
<b>Huế A Lưới</b>	257	231	229	139	29%	24%	24%	24%	19%	20%	20%	17%	-34%	-16%	-16%	-32%
<b>Huế Hoa Nghiê</b>	36	36	45	29	3%	6%	11%	3%	3%	6%	4%	0%	0%	0%	-60%	-100%
<b>Huế Total</b>	293	267	274	168	26%	22%	22%	21%	17%	18%	18%	14%	-33%	-16%	-20%	-34%

<b>(b) # Students by Age – Partial Support</b>																
	Age Group				9/2020 Malnutrition Rate (Sep Age)				1/2021 Malnutrition Rate (Sep Age)				Change in Maln. Rate (9/2020 – 6/2021)			
	≤ 36	37-48	49-60	> 60	≤ 36	37-48	49-60	> 60	≤ 36	37-48	49-60	> 60	≤ 36	37-48	49-60	> 60
<b>Huế</b>	236	214	264	178	6%	5%	5%	5%	3%	7%	5%	3%	-38%	-40%	-7%	-33%

**Table 4: Population Change in Malnutrition Status Sep – June**

<b>(a) Population Status Change - Full Support</b>					
Name of Province/Area	Remain Malnourished	Became Nourished	Remained Nourished	Became Malnourished	Not Known
Quảng Trị	29%	7%	62%	1%	0%
Huế	14%	8%	75%	3%	0%

<b>(b) Population Status Change – Partial Support</b>					
Name of Province/Area	Remain Malnourished	Became Nourished	Remained Nourished	Became Malnourished	Not Known
Huế	3%	2%	94%	1%	0%

**Table 5: September Malnourished Change in Malnutrition Status Sep – May**

<b>(a) Malnourished Status Change - Full Support</b>			
Name of Province/Area	Remain Malnourished	Became Nourished	Not Known
Quảng Trị	80%	20%	0%
Huế	63%	37%	0%

<b>(b) Malnourished Status Change – Partial Support</b>			
Name of Province/Area	Remain Malnourished	Became Nourished	Not Known
Huế	67%	33%	0%

**Table 6: Anemia Rates by Area**

<b>(a) Anemia Screening for Malnourished – Full Support</b>					
Province / Area	# Maln (9/2020)	Anemic (1/2021)		Anemic (5/2021)**	
		# (% Yes)	# (% Unk.)	# (% Yes)	# (% Unk)
Quảng Trị	141	79 (56%)	1%	n/a	n/a
Huế *	222	62 (28%)	7%	n/a	n/a

(\*) No Hoa Nghiê m school

<b>(b) Anemia Screening for =&lt; 36-mo – Full Support</b>					
Province / Area	# (9/2020)	Anemic (1/2021)		Anemic (5/2021)**	
		# (% Yes)	# (% Unk.)	# (% Yes)	# (% Unk)
Quảng Trị	87	47 (54%)	1%	n/a	n/a
Huế*	259	69 (27%)	11%	n/a	n/a

(\*) No Hoa Nghiê m school

(\*\*) No re-screeing in May due to the pandemic

**Table 7: 7-Weekend Rotation NEC Sessions:** Please include some details on the recipes taught and behaviors promoted within the groups – including the number of times each was taught. (*Within the timeframe of this report*)

NEC Session Participant Groups		School Year 2020-2021			
Cohort	School/Community	# of Participants		Average % Attendance <sup>(3)</sup>	Results in knowledge/promoted practices among participating parents via a 17-question test <sup>(4)</sup>
		Planned <sup>(1)</sup>	Actual <sup>(2)</sup>		
1	QT - Linh Thượng TT	40-60	. Group 1: 15 parents . Group 2: 15 parents . Group 3: 15 parents . Group 4:	97% (58/60) 90% (54/60) 95% (57/60)	(Please refer to the tables below)
2	QT - Linh Thượng KM	10-15	. Group 1: 15 parents	93% (14/15)	(Please refer to the tables below)
3	QT - Vĩnh Trường	40-60	. Group 1: 13 parents . Group 2: 14 parents . Group 3: 15 parents . Group 4:	87% (45/52) 98% (55/56) 93% (56/60)	(Please refer to the tables below)
4	QT - Hoa Lan	40-60	. Group 1: 17 parents . Group 2: 11 parents . Group 3: 17 parents . Group 4:	90% (61/68) 91% (40/44) 94% (64/68)	(Please refer to the tables below)
5	Huế - A Ngo	40-60	. Group 1: 15 parents . Group 2: 19 parents . Group 3: 19 parents . Group 4:	98% (59/60) 93% (71/76) 95% (72/76)	(Please refer to the tables below)
6	Huế - Hồng Trung	40-60	. Group 1: 15 parents . Group 2: 15 parents . Group 3: 15 parents . Group 4:	93% (56/60) 88% (53/60) 92% (55/60)	(Please refer to the tables below)

7	Huế - Hồng Vân TT	40-60	. <b>Group 1:</b> 13 parents . <b>Group 2:</b> 13 parents . <b>Group 3:</b> 13 parents . <b>Group 4:</b>	<b>96%</b> (50/52) <b>92%</b> (48/52) <b>94%</b> (49/52)	(Please refer to the tables below)
8	Huế - Hồng Vân đP	20-30	. <b>Group 1:</b> 13 parents . <b>Group 2:</b> 11 parents	<b>96%</b> (50/52) <b>100%</b> (11/11)	(Please refer to the tables below)
9	Huế - Điền Hải		Canceled	n/a	n/a
10	Huế - Điền Lộc		Canceled	n/a	n/a
11	Huế - Hoa Nghiêm		Canceled	n/a	n/a
12	Huế - Đông Phú		Canceled	n/a	n/a
<b>TOTAL</b>		<b>270-405</b>	<b>308<sup>(4)</sup></b>		

(1) # of Participants Planned: Each group is composed of 10-15 parents.

(2) # of Participants Actual: Parents actually registered at each location.

(3) Only Attendance Percentage within the time frame of the Q2 reporting period.

(4) As of the Q2 reporting. No new data during the final reporting period.

**Pre- and Post-test:** Evaluation of parents' knowledge before and after the 4-week NEC session.

The table below summarized the percentage of parents with **correct answers** to the 17-question test from 4 lesson plans. Vietnamese-language recipes are available upon request. Due to absences, some parents did not attend the Pre-test and some did not attend the Post-test; thus, the results do not come from individual parents but collectively as a group.

From 1/9 to 1/31/2021:

ATTENDANCE																	
Pre-Test		13/17	11/13	14/15	14/15	14/15	15/15	13/13	13/13								
Post-Test		15/17	13/13	15/15	14/15	15/15	13/15	11/13	11/13								
		PERCENT of CORRECT ANSWERS															
QUESTIONS	Hoa Lan AR + LC		Vĩnh Trường		Linh Thượng TT		Linh Thượng KM		A Ngo		Hồng Trung		Hồng Vân TT		Hồng Vân Điểm Phụ		
	Pre-	Post-	Pre-	Post-	Pre-	Post-	Pre-	Post-	Pre-	Post-	Pre-	Post-	Pre-	Post-	Pre-	Post-	
1. Anemia prevention	100%	100%	100%	100%	100%	100%	100%	100%	86%	100%	100%	100%	100%	100%	100%	100%	
2. Hygiene/Sanitation	100%	100%	100%	100%	100%	100%	100%	100%	93%	100%	80%	100%	100%	100%	100%	100%	
3. Hand-washing	100%	93%	100%	100%	100%	100%	100%	100%	100%	100%	100%	100%	100%	100%	100%	100%	
4. Hand-washing	100%	7%	0%	100%	0%	100%	0%	100%	0%	100%	0%	100%	0%	100%	0%	100%	
5. Breastfeeding	100%	100%	91%	100%	100%	100%	100%	100%	100%	100%	100%	100%	100%	100%	100%	100%	
6. Iodized salt effect	100%	100%	100%	100%	100%	100%	100%	100%	100%	100%	100%	100%	100%	100%	100%	100%	
7. Food supplement	100%	100%	91%	100%	100%	100%	100%	100%	86%	100%	100%	100%	100%	100%	100%	100%	
8. Feeding frequency	92%	7%	100%	0%	0%	100%	0%	100%	29%	100%	71%	100%	0%	100%	8%	100%	
9. Feeding when sick	100%	100%	100%	100%	100%	100%	100%	100%	100%	100%	93%	100%	100%	100%	100%	100%	
10. Feeding when sick	100%	100%	100%	100%	100%	100%	100%	100%	73%	100%	100%	100%	100%	100%	100%	100%	
11. Food with Iron	85%	0%	100%	100%	93%	0%	0%	100%	14%	100%	7%	100%	0%	100%	0%	100%	
12. Reasons for Vit. A	100%	100%	100%	100%	100%	100%	100%	100%	100%	100%	100%	100%	100%	100%	100%	100%	
13. Food with Vit. A	100%	100%	100%	100%	100%	100%	100%	100%	64%	100%	100%	100%	100%	100%	100%	100%	
14. Constipation prev.	100%	100%	100%	100%	100%	100%	100%	100%	100%	100%	100%	100%	100%	100%	100%	100%	
15. Oil and calories	100%	100%	100%	100%	100%	100%	100%	100%	93%	100%	100%	100%	100%	100%	100%	100%	
16. Food with high protein content	85%	0%	100%	100%	50%	100%	0%	100%	100%	100%	100%	100%	0%	100%	54%	100%	
17. Protein source	92%	100%	100%	100%	100%	100%	100%	100%	100%	100%	100%	100%	100%	100%	100%	100%	



**From 3/6 to 3/27/2021:**

ATTENDANCE																	
Pre-Test	18/19	13/15	12/13	11/11	10/11	13/14	N/A	14/15									
Post-Test	16/19	13/15	13/13	11/11	10/11	14/14	N/A	12/15									
<b>PERCENT of CORRECT ANSWERS</b>																	
QUESTIONS	A Ngo		Hồng Trung		Hồng Vân TT		Hồng Vân Điểm Phụ		Hoa Lan AR + LC		Vĩnh Trường		Linh Thượng KM		Linh Thượng TT		
	Pre-	Post-	Pre-	Post-	Pre-	Post-	Pre-	Post-	Pre-	Post-	Pre-	Post-	n/a	n/a	Pre-	Post-	
1. Anemia prevention	100%	100%	100%	100%	100%	100%	100%	100%	100%	100%	100%	100%			100%	100%	
2. Hygiene/Sanitation	94%	94%	100%	100%	100%	100%	100%	100%	100%	100%	100%	100%			100%	100%	
3. Hand-washing	100%	100%	100%	100%	100%	100%	91%	100%	100%	100%	100%	100%			100%	100%	
4. Hand-washing	100%	100%	100%	100%	100%	0%	0%	100%	0%	100%	100%	100%			100%	100%	
5. Breastfeeding	89%	100%	100%	100%	100%	100%	100%	100%	100%	100%	100%	100%			100%	100%	
6. Iodized salt effect	100%	100%	100%	100%	100%	100%	100%	100%	100%	100%	100%	100%			100%	100%	
7. Food supplement	94%	100%	77%	100%	100%	77%	91%	100%	100%	100%	100%	100%			100%	100%	
8. Feeding frequency	11%	100%	0%	0%	100%	100%	8%	0%	0%	100%	100%	100%			79%	100%	
9. Feeding when sick	100%	100%	100%	100%	100%	100%	100%	100%	90%	100%	100%	100%			100%	100%	
10. Feeding when sick	89%	100%	100%	100%	100%	100%	91%	100%	100%	100%	100%	100%			100%	100%	
11. Food with Iron	83%	100%	100%	100%	100%	100%	100%	100%	60%	100%	92%	100%			100%	100%	
12. Reasons for Vit. A	94%	100%	100%	100%	100%	100%	100%	100%	100%	100%	100%	100%			100%	100%	
13. Food with Vit. A	95%	100%	92%	100%	100%	100%	100%	100%	80%	100%	100%	100%			100%	100%	
14. Constipation prev.	94%	100%	100%	100%	100%	100%	91%	100%	100%	100%	100%	100%			100%	100%	
15. Oil and calories	89%	100%	100%	100%	100%	100%	100%	100%	100%	100%	100%	100%			100%	100%	
16. Food with protein	11%	100%	100%	100%	0%	100%	91%	100%	0%	100%	100%	100%			100%	100%	
17. Protein source	100%	100%	100%	100%	100%	100%	100%	100%	90%	100%	100%	100%			100%	100%	

**From 4/3 to 4/25/2021:**

<b>ATTENDANCE</b>																
Pre-Test	18/19	14/15	12/13	N/A	16/17	11/15	N/A	14/15								
Post-Test	17/19	14/15	12/13	N/A	16/17	15/15	N/A	14/15								
<b>PERCENT of CORRECT ANSWERS</b>																
QUESTIONS	A Ngo		Hồng Trung		Hồng Vân TT		Hồng Vân Điểm Phụ		Hoa Lan AR+LC		Vĩnh Trường		Linh Thượng KM		Linh Thượng TT	
	Pre-	Post-	Pre-	Post-	Pre-	Post-	n/a	n/a	Pre-	Post-	Pre-	Post-	n/a	n/a	Pre-	Post-
1. Anemia prevention	100%	94%	100%	100%	100%	100%			87%	100%	100%	100%			100%	100%
2. Hygiene/Sanitation	94%	100%	71%	100%	100%	100%			50%	100%	100%	100%			100%	100%
3. Hand-washing	100%	100%	100%	100%	100%	100%			100%	100%	100%	100%			100%	100%
4. Hand-washing	100%	100%	100%	100%	100%	100%			100%	100%	100%	100%			100%	100%
5. Breastfeeding	100%	100%	100%	100%	100%	100%			44%	100%	100%	100%			100%	100%
6. Iodized salt effect	100%	100%	100%	100%	100%	100%			100%	100%	100%	100%			100%	100%
7. Food supplement	100%	100%	100%	100%	100%	100%			56%	100%	100%	100%			100%	100%
8. Feeding frequency	100%	100%	71%	100%	100%	100%			75%	0%	0%	100%			100%	100%
9. Feeding when sick	100%	100%	100%	100%	100%	100%			100%	100%	100%	100%			100%	100%
10. Feeding when sick	100%	100%	100%	100%	100%	100%			100%	100%	100%	100%			100%	100%
11. Food with Iron	100%	100%	71%	100%	100%	100%			56%	100%	100%	100%			100%	100%
12. Reasons for Vit. A	100%	100%	100%	100%	100%	100%			100%	100%	100%	0%			100%	100%
13. Food with Vit. A	100%	100%	100%	100%	100%	100%			87%	100%	100%	100%			100%	100%
14. Constipation prev.	100%	100%	100%	100%	100%	100%			100%	100%	100%	100%			93%	100%
15. Oil and calories	100%	100%	100%	100%	100%	100%			100%	100%	100%	100%			100%	100%
16. Food with protein	100%	100%	71%	100%	50%	100%			44%	100%	100%	0%			81%	100%
17. Protein source	100%	100%	100%	100%	100%	100%			100%	100%	100%	100%			100%	100%

**From 5/8 to 5/30/2021:** No NEC is available due to the Covid-19 pandemic during the final reporting period.

ATTENDANCE																
Pre-Test						N/A						N/A				
Post-Test						N/A						N/A				
PERCENT of INCORRECT ANSWERS																
QUESTIONS	A Ngo		Hồng Trung		Hồng Vân TT		Hồng Vân Điểm Phụ		Hoa Lan AR+LC		Vĩnh Trường		Linh Thượng KM		Linh Thượng TT	
	Pre-	Post-	Pre-	Post-	Pre-	Post-	n/a	n/a	Pre-	Post-	Pre-	Post-	n/a	n/a	Pre-	Post-
1. Anemia prevention																
2. Hygiene/Sanitation																
3. Hand-washing																
4. Hand-washing																
5. Breastfeeding																
6. Iodized salt effect																
7. Food supplement																
8. Feeding frequency																
9. Feeding when sick																
10. Feeding when sick																
11. Food with Iron																
12. Reasons for Vit. A																
13. Food with Vit. A																
14. Constipation prev.																
15. Oil and calories																
16. Food with protein																
17. Protein source																

Photos highlighting the distribution of food during the pandemic for PNSP families



Parents gathered to receive food and masks  
Vĩnh Trường, **Quang Tri**, 6/2021



Parents gathered to receive food and masks  
Làng Cát (Hoa Lan), **Quang Tri**, 6/2021



Banner listing food items in each package to be distributed  
(rice, beans, sugar, veg oil, dried mushroom, lime, eggs, masks)



Face masks distributed in **Quảng Trị** and **Huế** - 6/2021



*Parents gathering to receive food packages and masks  
Hồng Trung, A Lưới, Huế, 6/2021*



*School personnel receiving donated food and masks  
Hồng Trung, A Lưới, Huế, 6/2021*